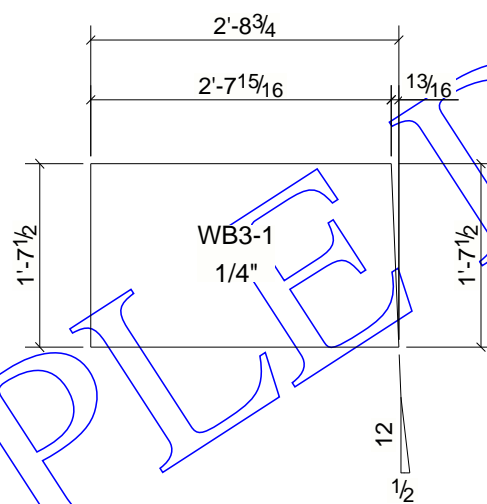
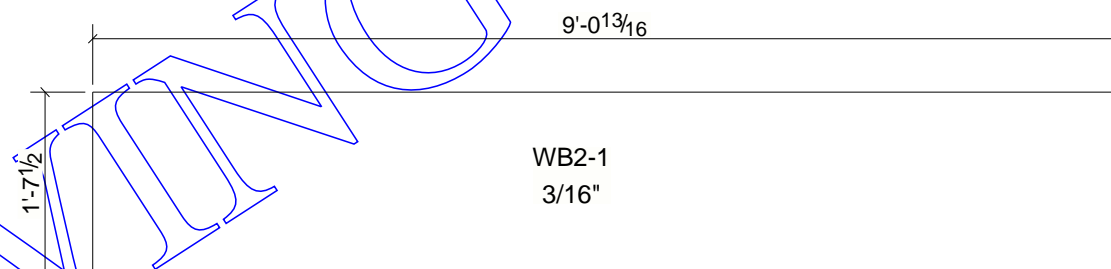
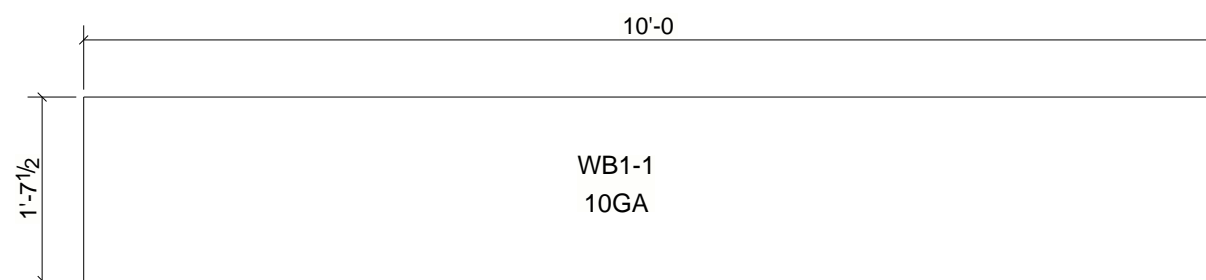
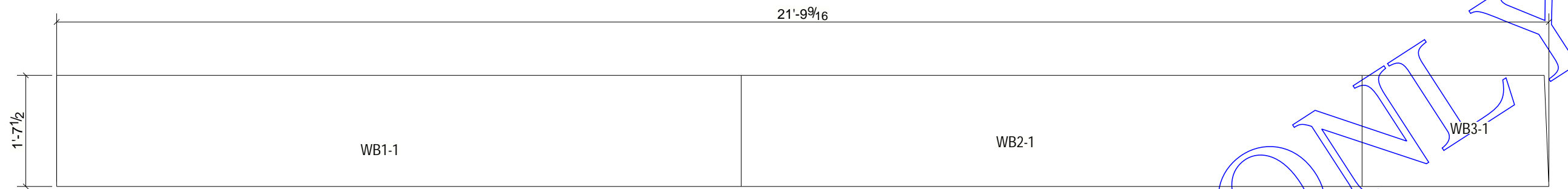


SAMPLE DRAWING ONLY

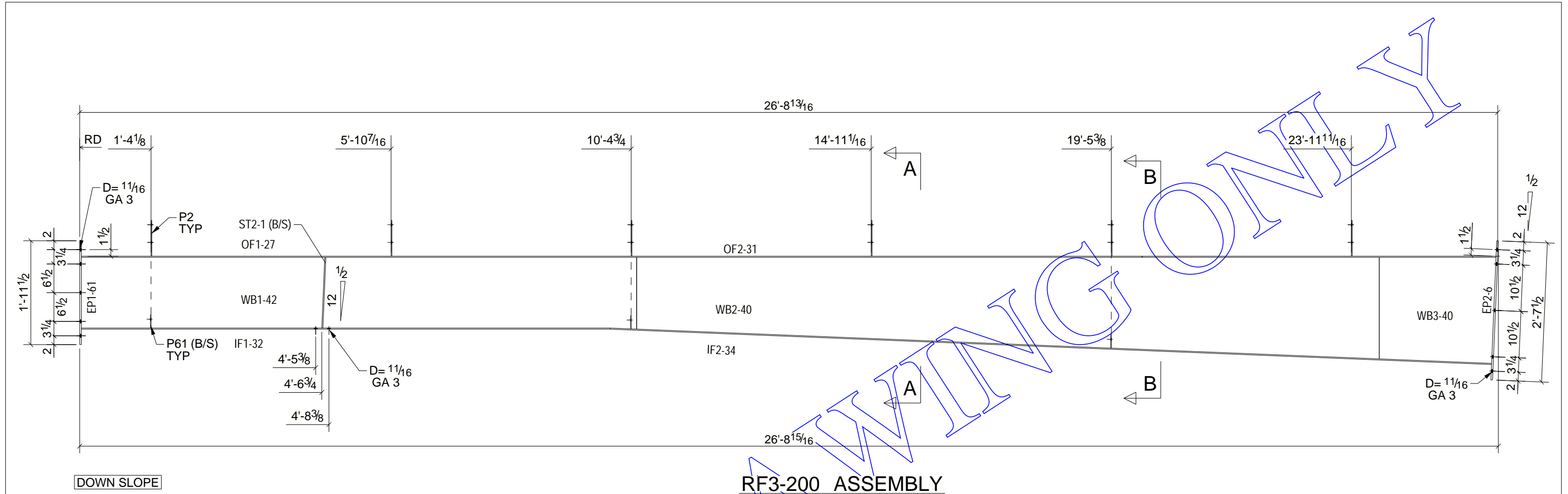
REV	DESCRIPTION	DATE
PART: RF1-1	QTY: 1	FINISH: <b>RED OXIDE</b>





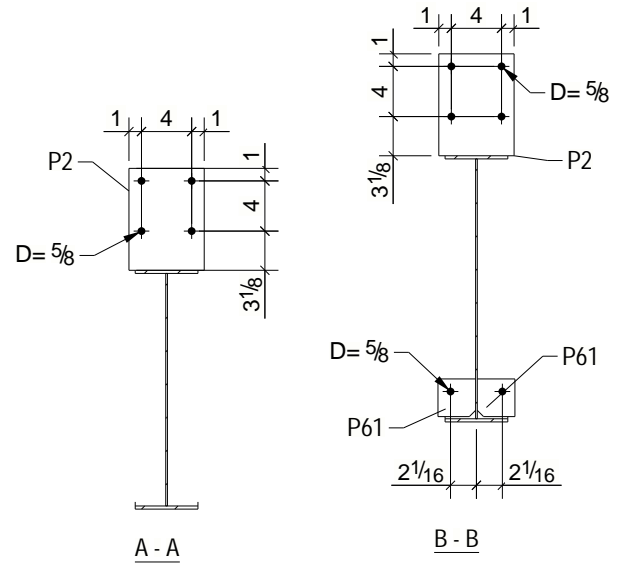
SAMPLE DRAWING ONLY

REV	DESCRIPTION	DATE
PART: RF1-4	QTY: 1	FINISH: <b>RED OXIDE</b>



### BILL OF MATERIAL

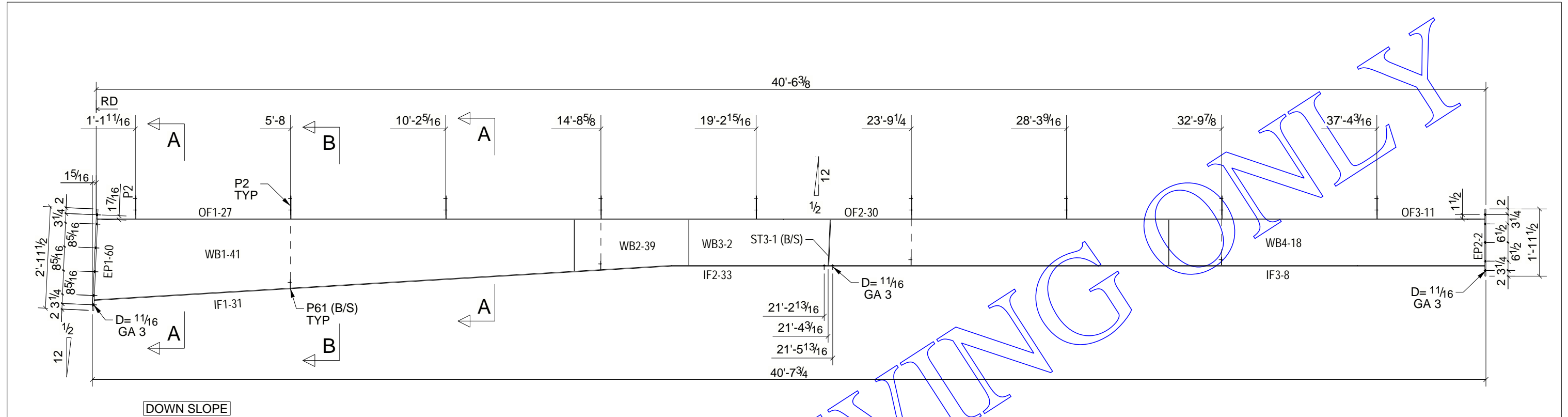
Mark	Qty Ea	Qty Tot	Description	Length	Total Wt.	Remarks
WB3-40	1	1	SHT10GAX24"	2'-2 7/16"	23.2	A572-GR.55
WB2-40	1	1	SHT10GAX23"	14'-0"	125.7	A572-GR.55
WB1-42	1	1	SHT10GAX16 1/4"	10'-5 5/8"	76.7	A572-GR.55
ST2-1	2	2	PL1/4"X2 1/2"	1'-3 7/8"	5.6	A529-GR.55
P61	6	6	PL1/8"X3"	0'-3"	1.9	A572-GR.50
P2	6	6	PL3/16"X6"	0'-8 1/8"	15.6	A572-GR.50
OF2-31	1	1	PL1/4"X5"	6'-8 1/16"	28.4	A529-GR.55
OF1-27	1	1	PL1/4"X5"	20'-0"	85.1	A529-GR.55
IF2-34	1	1	PL1/4"X5"	16'-7 9/16"	70.8	A529-GR.55
IF1-32	1	1	PL1/4"X5"	9'-11 5/8"	42.4	A529-GR.55
EP2-6	1	1	PL3/8"X8"	2'-7 1/2"	26.8	A529-GR.55
EP1-61	1	1	PL3/8"X6"	1'-11 1/2"	15.0	A529-GR.55
<b>TOTAL WEIGHT THIS DRAWING</b>					<b>517.1</b>	



REV	DESCRIPTION	DATE
PART: RF3-200		QTY: 1
FINISH: <b>RED OXIDE</b>		

Tekla Structures

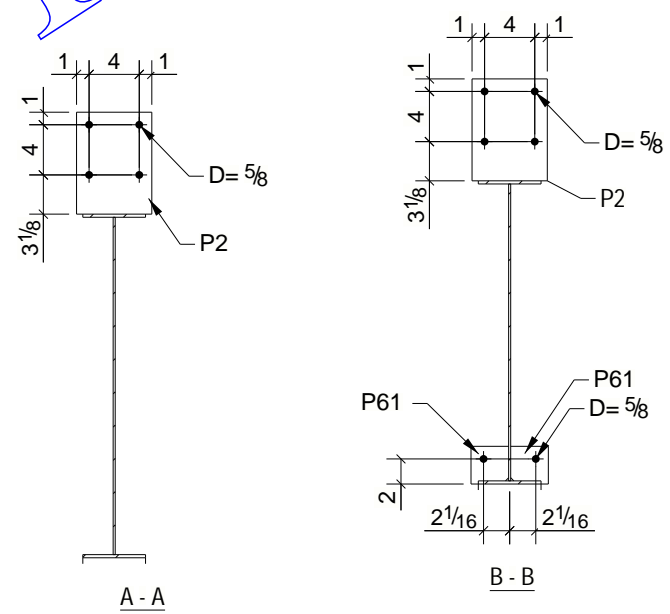




**RF3-201 ASSEMBLY**

**BILL OF MATERIAL**

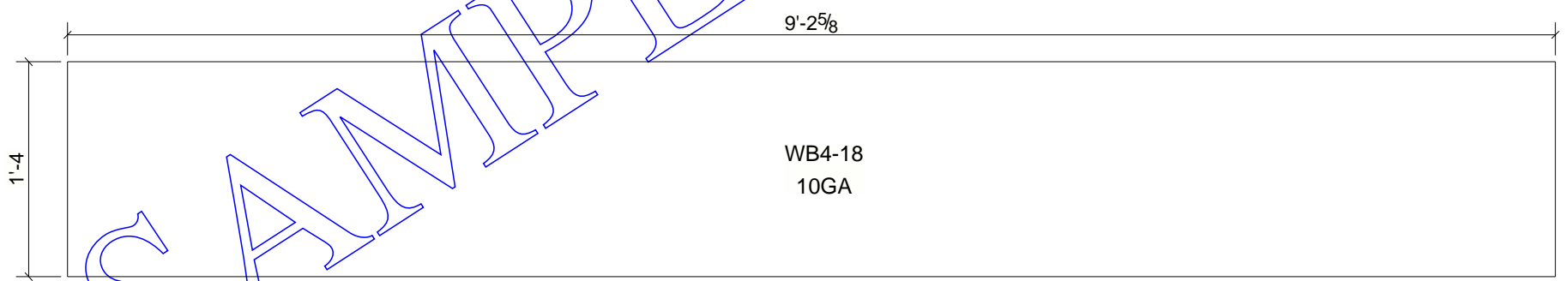
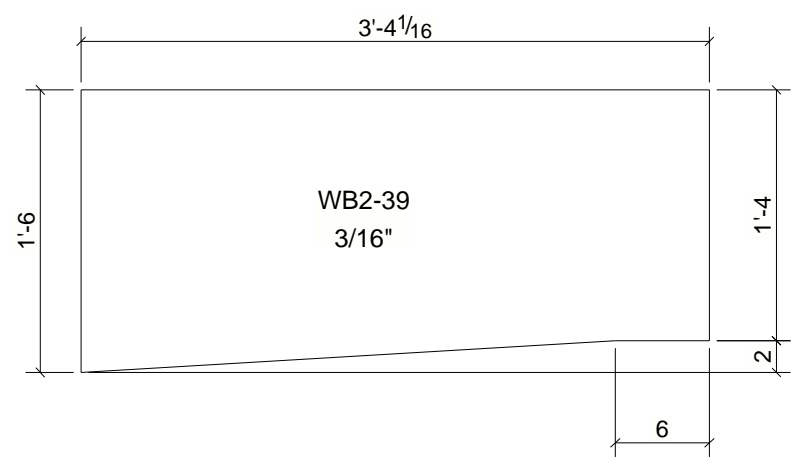
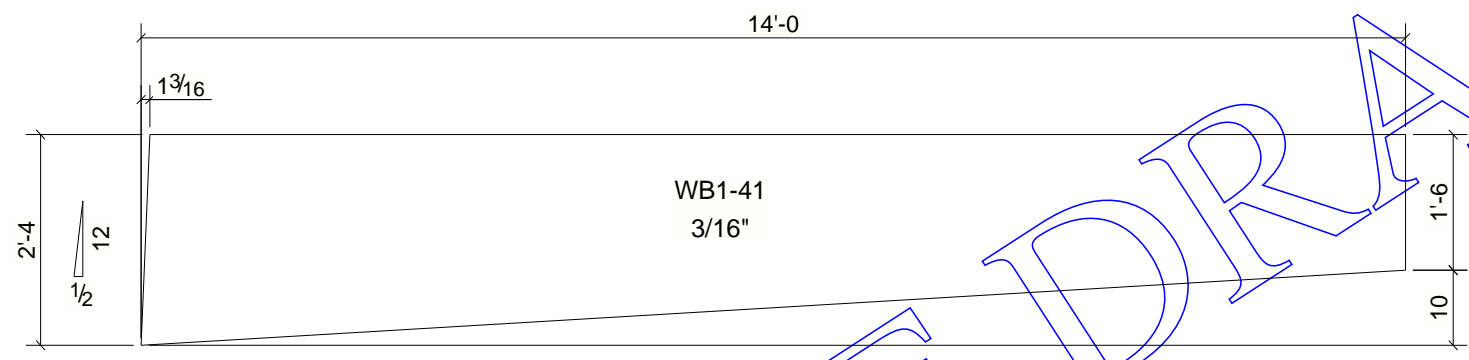
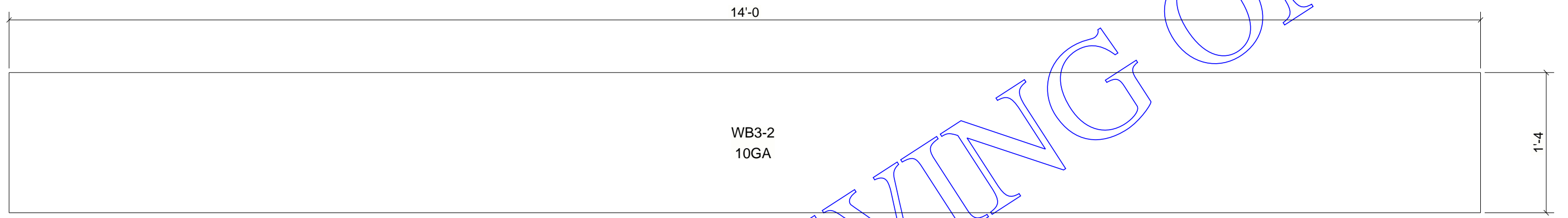
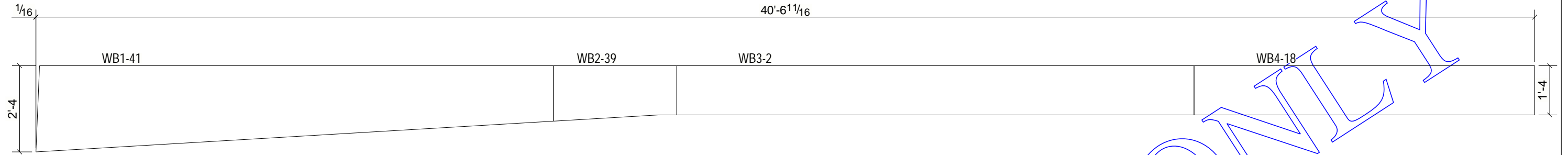
Mark	Qty Ea	Qty Tot	Description	Length	Total Wt.	Remarks
WB4-18	1	1	SHT10GAX16"	9'-2 5/8"	67.5	A572-GR.55
WB3-2	1	1	SHT10GAX16"	14'-0"	102.5	A572-GR.55
WB2-39	1	1	PL3/16"X18"	3'-4 1/16"	31.5	A572-GR.55
WB1-41	1	1	PL3/16"X28"	14'-0"	179.5	A572-GR.55
ST3-1	2	2	PL1/4"X2 1/2"	1'-3 7/8"	5.6	A529-GR.55
P61	8	8	PL1/8"X3"	0'-3"	2.5	A572-GR.50
P2	9	9	PL3/16"X6"	0'-8 1/8"	23.3	A572-GR.50
OF3-11	1	1	PL1/4"X5"	0'-6"	2.1	A529-GR.55
OF2-30	1	1	PL1/4"X5"	19'-11 1/2"	84.9	A529-GR.55
OF1-27	1	1	PL1/4"X5"	20'-0"	85.1	A529-GR.55
IF3-8	1	1	PL1/4"X5"	3'-8 5/8"	15.8	A529-GR.55
IF2-33	1	1	PL1/4"X5"	20'-0"	85.1	A529-GR.55
IF1-31	1	1	PL1/4"X5"	16'-10 7/16"	71.8	A529-GR.55
EP2-2	1	1	PL3/8"X6"	1'-11 1/2"	15.0	A529-GR.55
EP1-60	1	1	PL1/2"X8"	2'-11 1/2"	40.3	A529-GR.55
TOTAL WEIGHT THIS DRAWING					812.5	



REV	DESCRIPTION	DATE
PART: RF3-201 QTY: 1 FINISH: <b>RED OXIDE</b>		

Tekla Structures

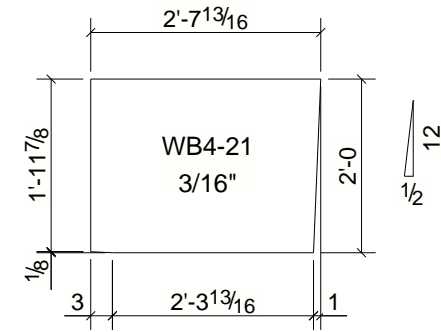
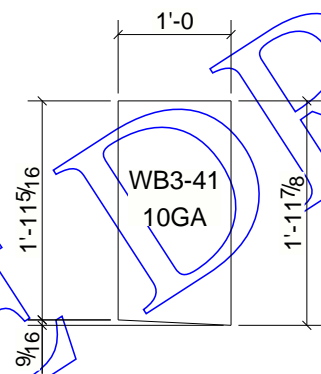
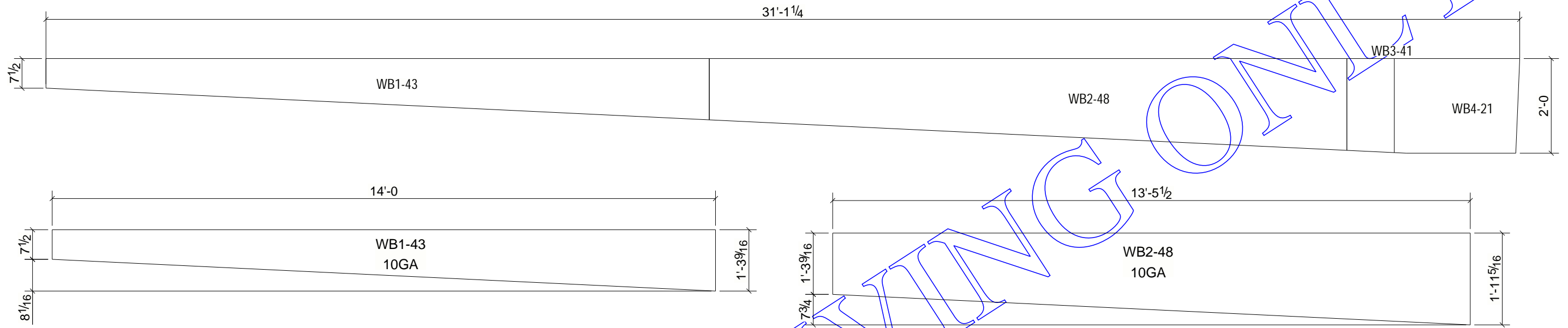




REV	DESCRIPTION	DATE
0	0	04/09/2021

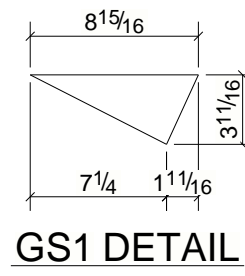
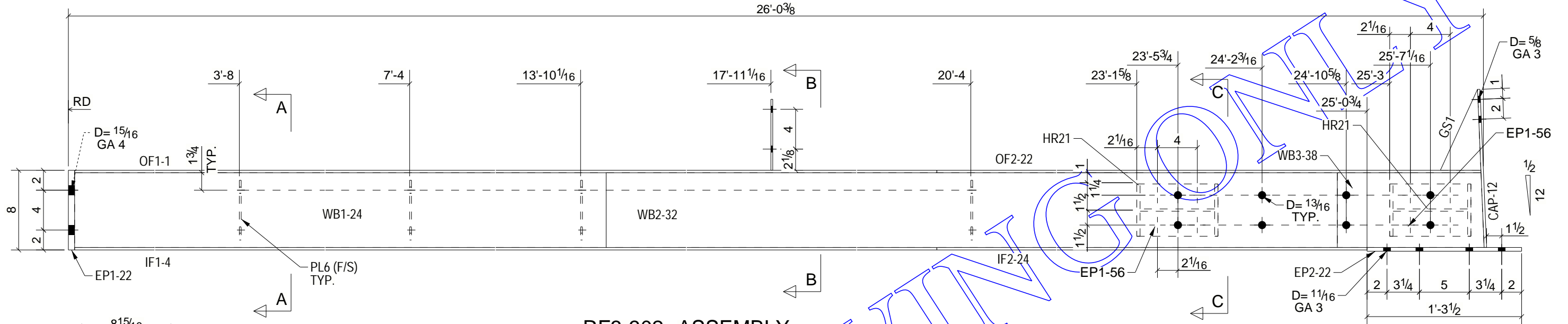
SAMPLE DRAWING ONLY



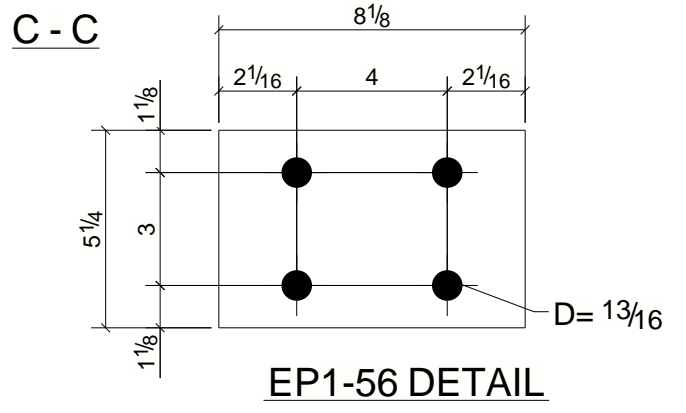
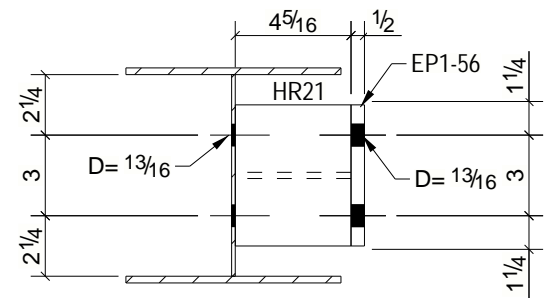
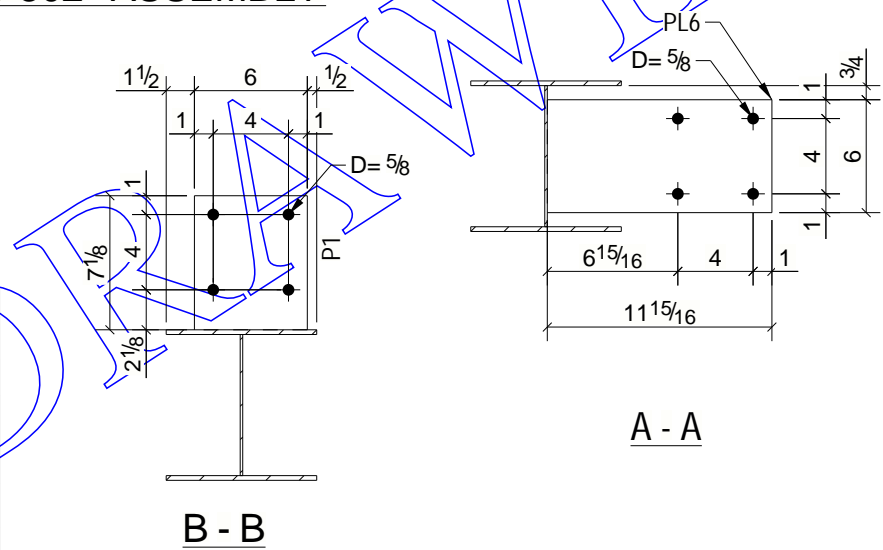


0	0	04/09/2021
REV	DESCRIPTION	DATE
PART: RF3-202	QTY: 1	FINISH: <b>RED OXIDE</b>

SAMPLE DRAFTING ONLY

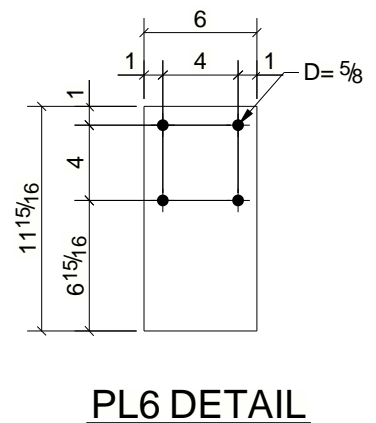


**RF3-302 ASSEMBLY**



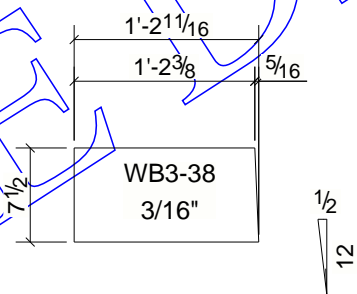
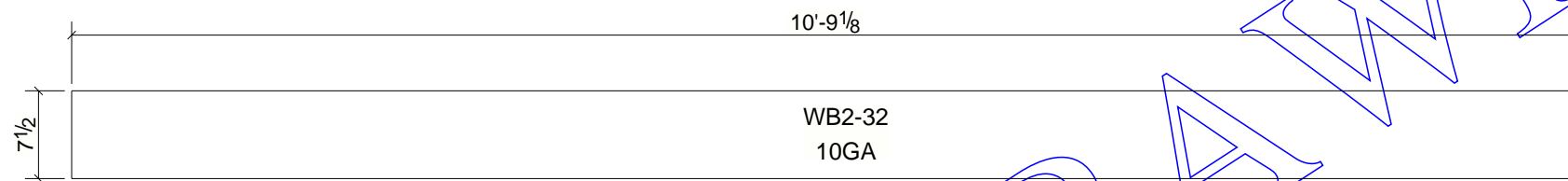
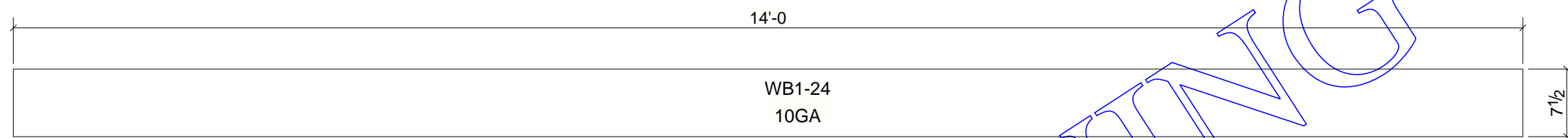
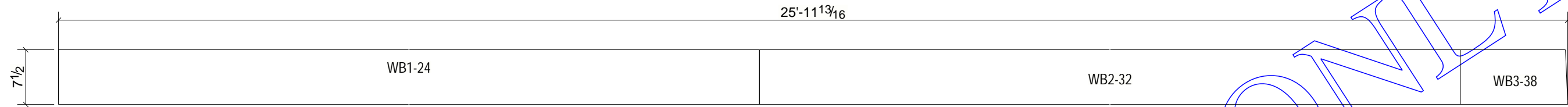
**BILL OF MATERIAL**

Mark	Qty Ea	Qty Tot	Description	Length	Total Wt.	Remarks
WB3-38	1	1	SHT8GAX7 1/2"	1'-2 11/16"	5.8	A572-GR.55
WB2-32	1	1	SHT10GAX7 1/2"	10'-9 1/8"	36.9	A572-GR.55
WB1-24	1	1	SHT10GAX7 1/2"	14'-0"	48.1	A572-GR.55
PL6	4	4	PL3/16"X6"	0'-11 15/16"	15.2	A529-GR.55
P1	1	1	PL3/16"X6"	0'-7 1/8"	2.3	A529-GR.55
OF2-22	1	1	PL1/4"X8"	5'-11 1/2"	40.6	A529-GR.55
OF1-1	1	1	PL1/4"X8"	20'-0"	136.1	A529-GR.55
IF2-24	1	1	PL1/4"X8"	5'-0 1/8"	34.1	A529-GR.55
IF1-4	1	1	PL1/4"X8"	20'-0"	136.1	A529-GR.55
HR21	2	2	W8X18	0'-4 5/16"	12.9	A992
GS1	1	1	PL3/16"X3 11/16"	0'-8 15/16"	0.9	A529-GR.55
EP2-22	1	1	PL3/8"X8"	1'-3 1/2"	13.2	A529-GR.55
EP1-56	2	2	PL1/2"X5 1/4"	0'-8 1/8"	12.1	A36
EP1-22	1	1	PL5/8"X8"	0'-8"	11.3	A529-GR.55
CAP-12	1	1	PL1/4"X8"	1'-3 7/8"	9.0	A529-GR.55
TOTAL WEIGHT THIS DRAWING					514.7	



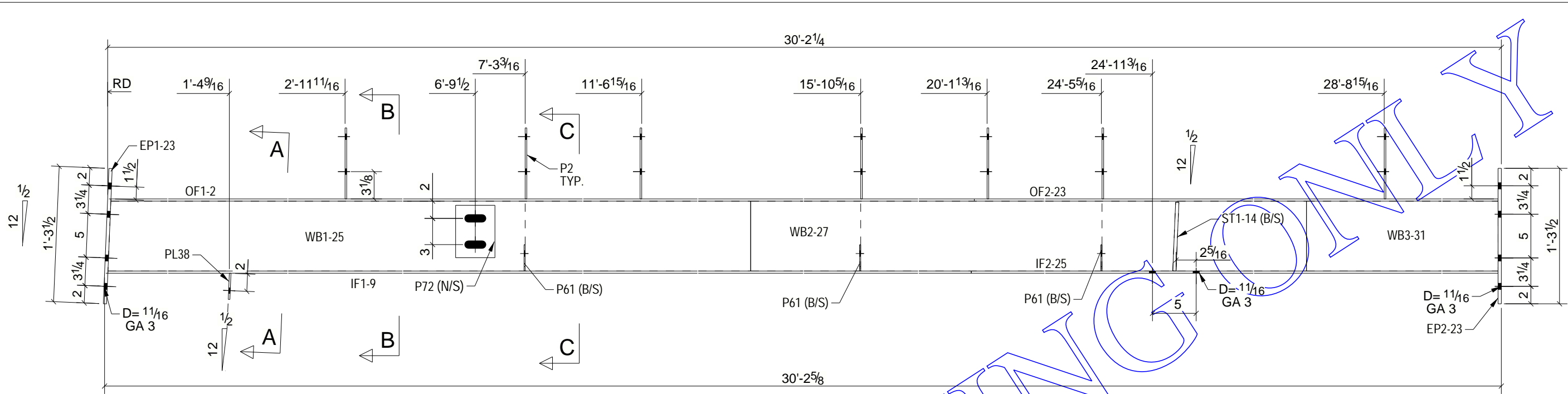
PART: RF3-302	QTY: 1	FINISH: RED OXIDE
---------------	--------	-------------------

Tekla Structures



SAMPLE DRAWING ONLY

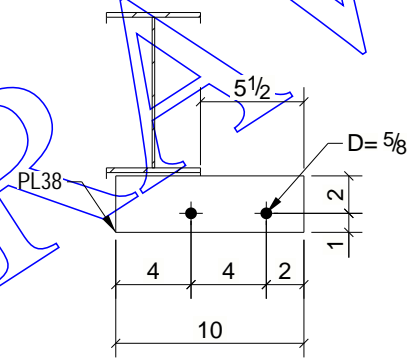
REV	DESCRIPTION	DATE
PART: RF3-302	QTY: 1	FINISH: <b>RED OXIDE</b>



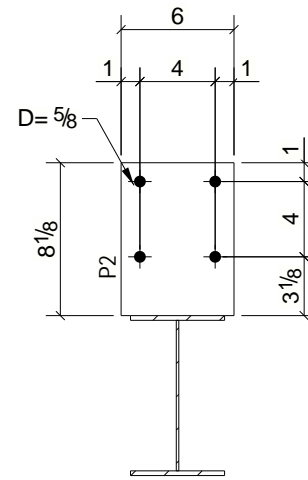
RF3-304 ASSEMBLY

BILL OF MATERIAL

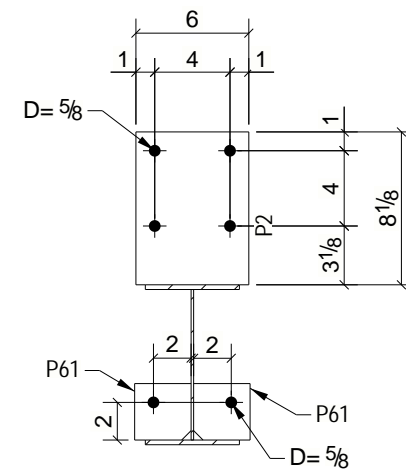
Mark	Qty Ea	Qty Tot	Description	Length	Total Wt.	Remarks
WB3-31	1	1	SHT10GAX8"	2'-1 7/8"	7.9	A572-GR.55
WB2-27	1	1	SHT10GAX8"	14'-0"	51.3	A572-GR.55
WB1-25	1	1	SHT10GAX8"	14'-0"	51.2	A572-GR.55
ST1-14	2	2	PL3/8"X2 1/2"	0'-7 7/8"	4.2	A529-GR.55
PL38	1	1	PL3/16"X3"	0'-10"	1.6	A572
P72	1	1	PL3/16"X4 1/2"	0'-6"	1.4	A36
P61	6	6	PL1/8"X3"	0'-3"	1.9	A572-GR.50
P2	7	7	PL3/16"X6"	0'-8 1/8"	18.1	A572-GR.50
OF2-23	1	1	PL1/4"X5"	10'-1 1/2"	43.1	A529-GR.55
OF1-2	1	1	PL1/4"X5"	20'-0"	85.1	A529-GR.55
IF2-25	1	1	PL1/4"X5"	10'-1 7/8"	43.2	A529-GR.55
IF1-9	1	1	PL1/4"X5"	20'-0"	85.1	A529-GR.55
EP2-23	1	1	PL3/8"X6"	1'-3 1/2"	9.9	A529-GR.55
EP1-23	1	1	PL3/8"X8"	1'-3 1/2"	13.2	A529-GR.55
TOTAL WEIGHT THIS DRAWING					417.1	



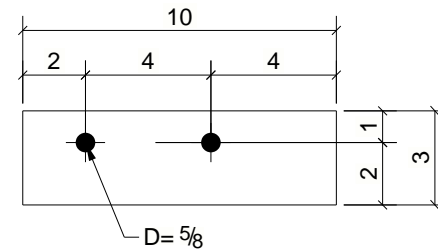
A - A



B - B



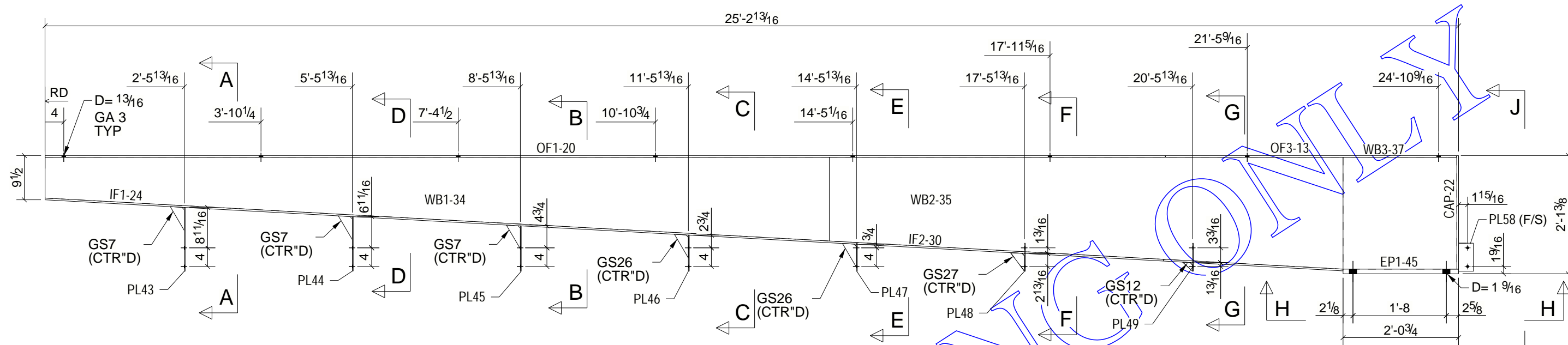
C - C



PL38 DETAIL

REV	DESCRIPTION	DATE
PART: RF3-304		QTY: 1
FINISH: RED OXIDE		

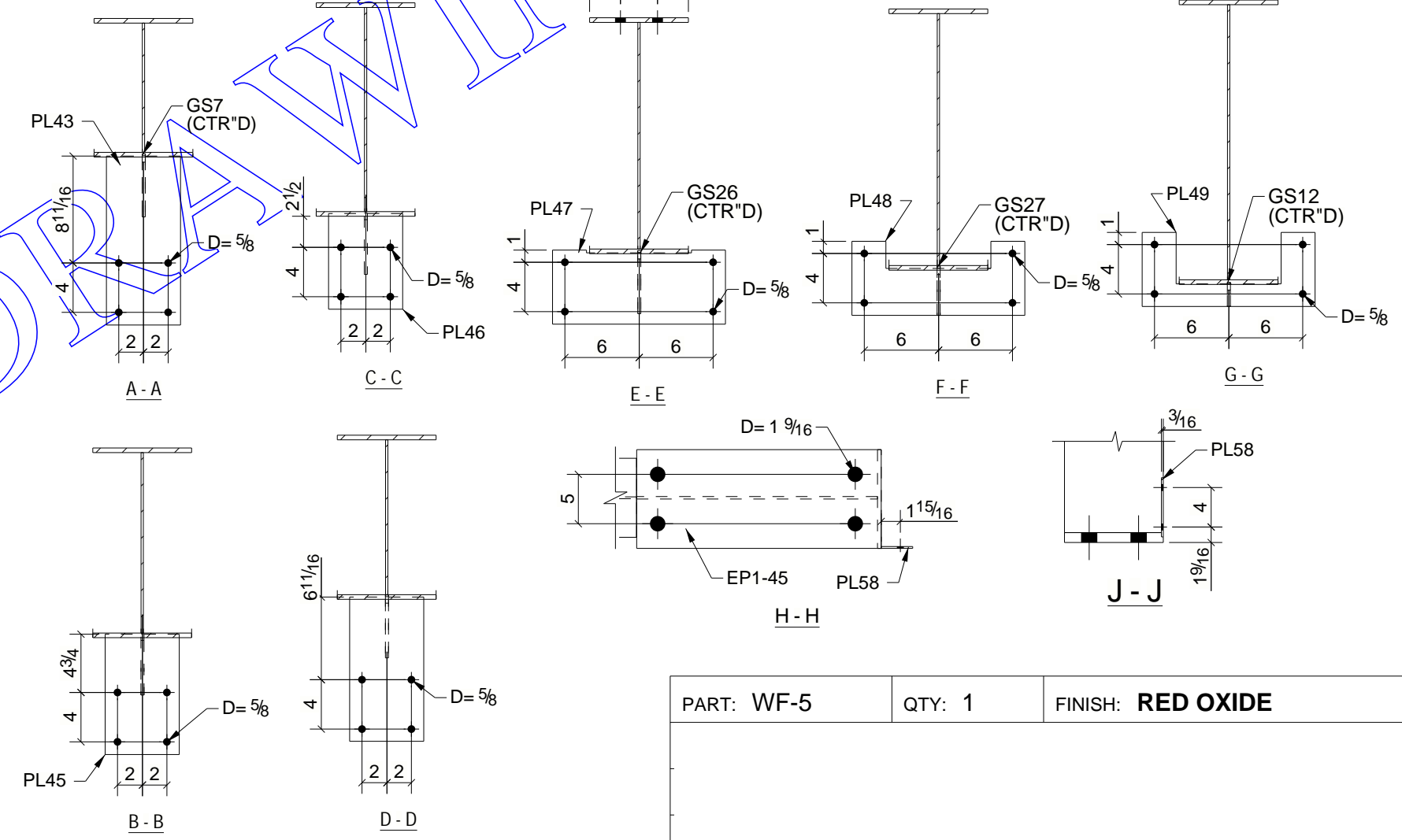




**WF-5 ASSEMBLY**

**BILL OF MATERIAL**

Mark	Qty Ea	Qty Tot	Description	Length	Total Wt.	Remarks
WB3-37	1	1	PL1/4"X24"	2'-0 3/8"	41.5	A572-GR.50
WB2-35	1	1	PL3/16"X24"	9'-2 1/16"	122.8	A572-GR.50
WB1-34	1	1	PL3/16"X17 15/16"	14'-0"	119.3	A572-GR.50
PL58	1	1	PL3/16"X3 3/16"	0'-6"	1.0	A529-GR.55
PL49	1	1	PL3/16"X6"	1'-2"	2.6	A529-GR.55
PL48	1	1	PL3/16"X6"	1'-2"	3.5	A529-GR.55
PL47	1	1	PL3/16"X6"	1'-2"	4.4	A529-GR.55
PL46	1	1	PL3/16"X6"	0'-7 3/4"	2.5	A529-GR.55
PL45	1	1	PL3/16"X6"	0'-9 3/4"	3.1	A529-GR.55
PL44	1	1	PL3/16"X6"	0'-11 11/16"	3.7	A529-GR.55
PL43	1	1	PL3/16"X6"	1'-1 11/16"	4.4	A529-GR.55
OF3-13	1	1	PL3/8"X8"	5'-2 3/8"	53.1	A572-GR.50
OF1-20	1	1	PL3/8"X8"	20'-0"	204.2	A572-GR.50
IF2-30	1	1	PL3/8"X8"	3'-2 1/2"	32.7	A572-GR.50
IF1-24	1	1	PL3/8"X8"	20'-0"	204.2	A572-GR.50
GS27	1	1	PL1/4"X2"	0'-5"	0.4	A572-GR.50
GS26	2	2	PL1/4"X2 1/4"	0'-5 15/16"	1.0	A572-GR.50
GS12	1	1	PL1/4"X1"	0'-2 7/8"	0.1	A572-GR.50
GS7	3	3	PL1/4"X2 1/4"	0'-5 15/16"	1.5	A572-GR.50
EP1-45	1	1	PL1"X10"	2'-0 3/4"	70.2	A572-GR.50
CAP-22	1	1	PL3/8"X10"	2'-0 3/8"	25.9	A572-GR.50
TOTAL WEIGHT THIS DRAWING					902.1	

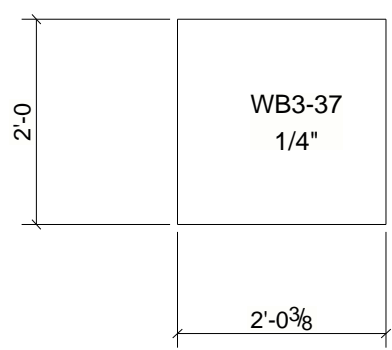
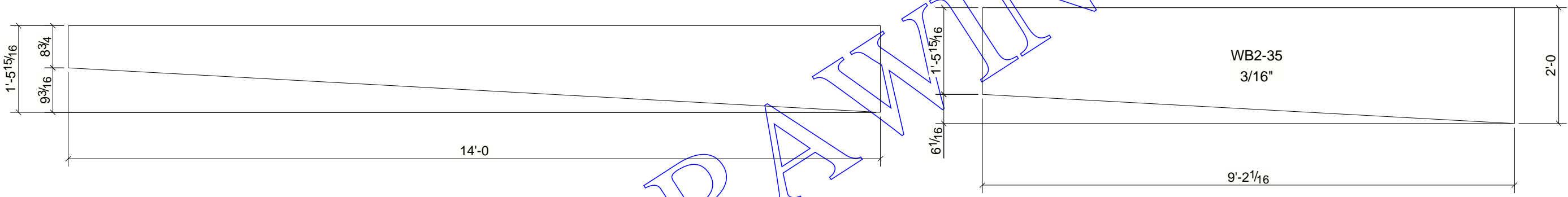
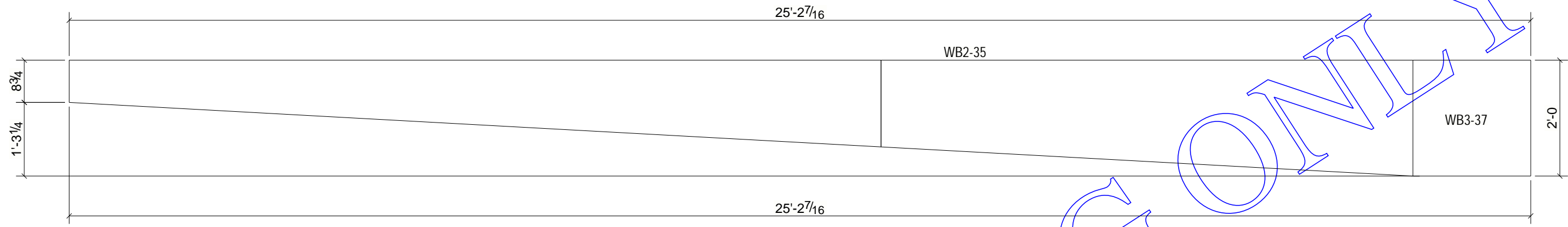


PART: WF-5	QTY: 1	FINISH: RED OXIDE
------------	--------	-------------------

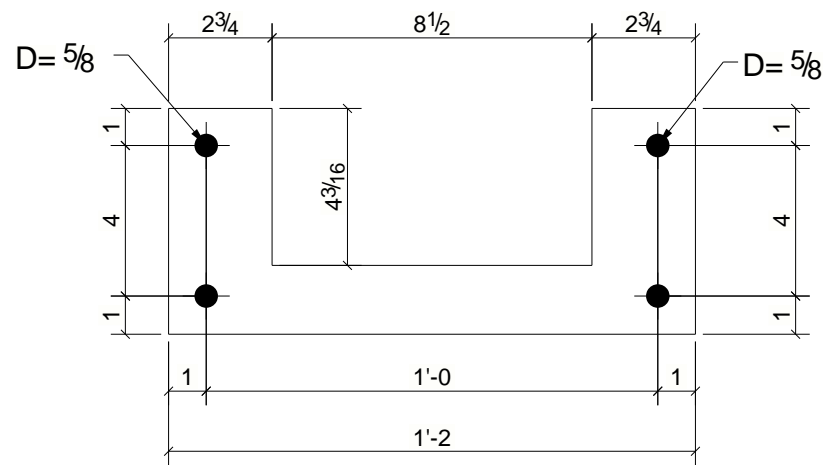
Tekla Structures



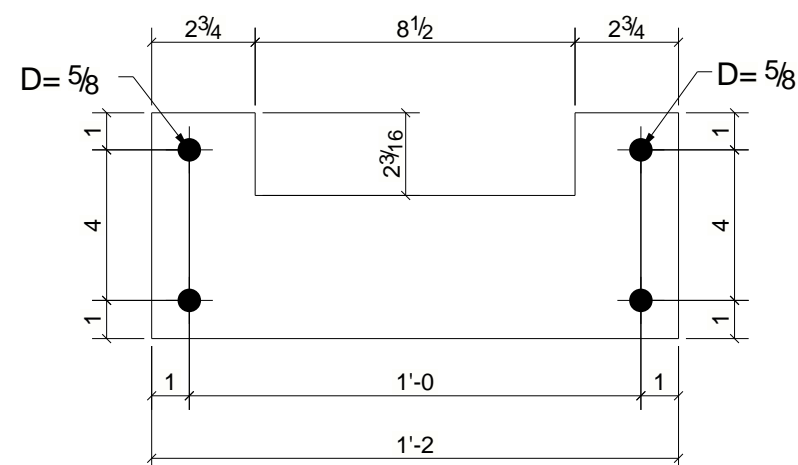
SAMPLE DRAWING ONLY



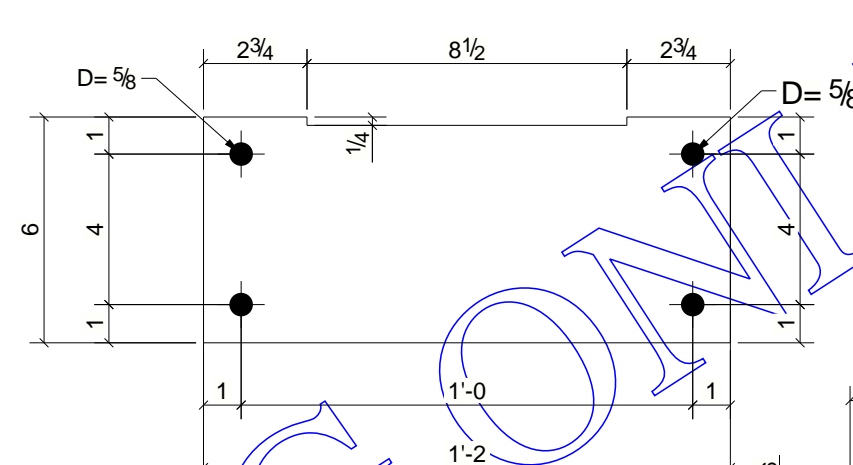
REV	DESCRIPTION	DATE



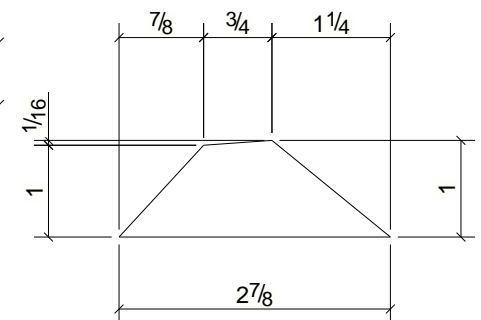
**PL49 DETAIL**



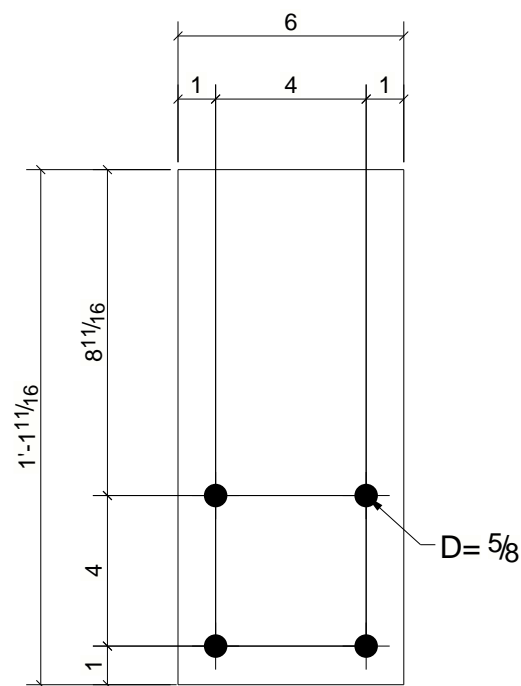
**PL48 DETAIL**



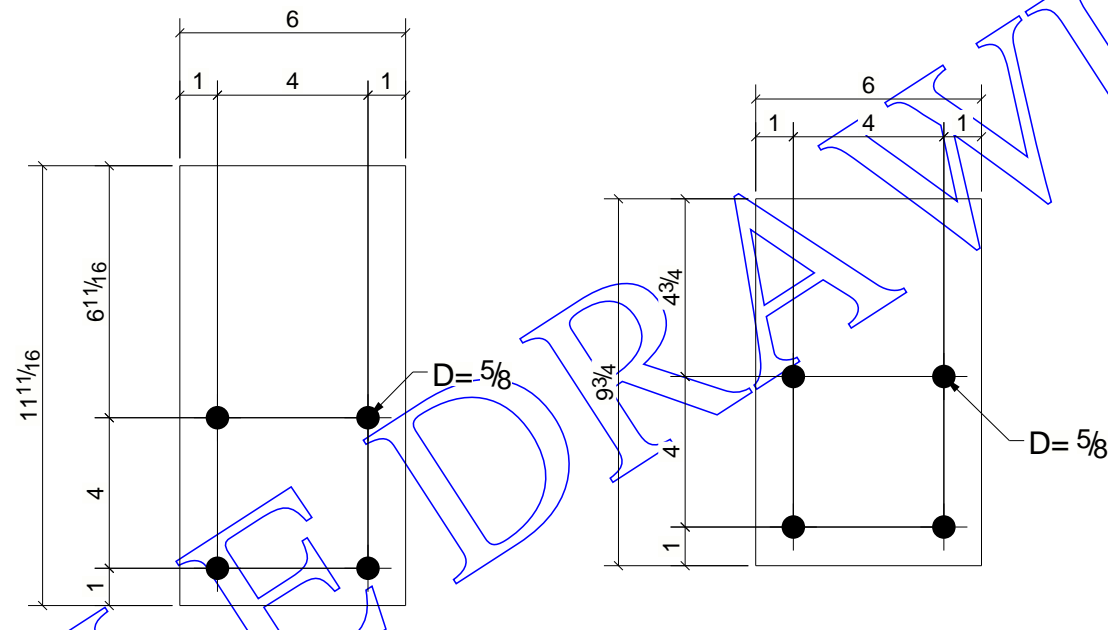
**PL47 DETAIL**



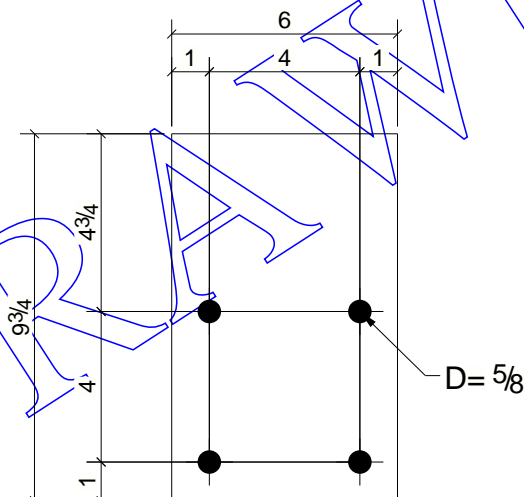
**GS12 DETAIL**



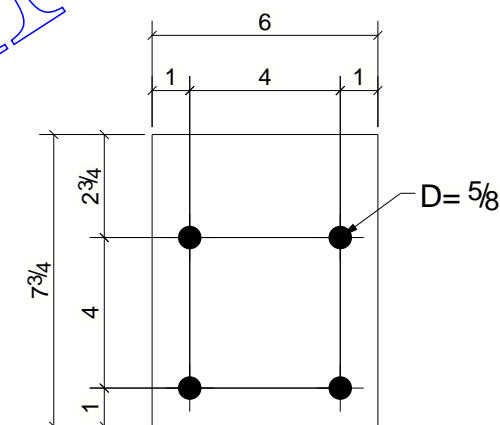
**PL43 DETAIL**



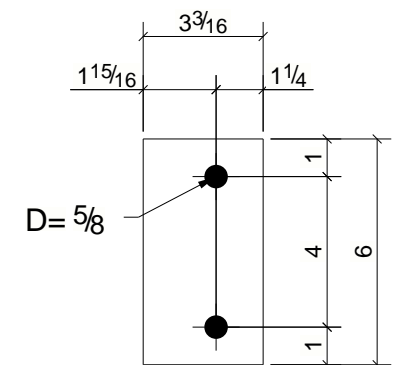
**PL44 DETAIL**



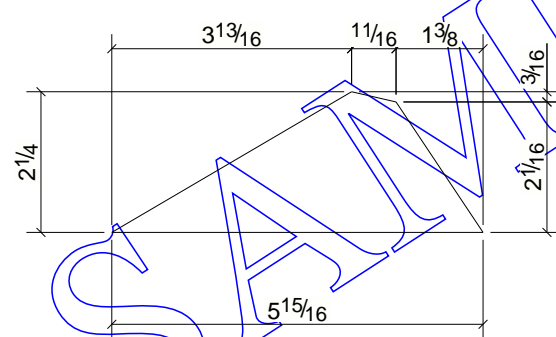
**PL45 DETAIL**



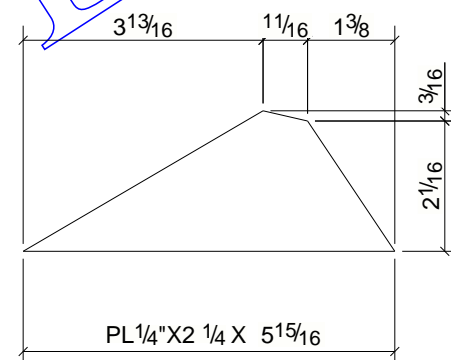
**PL46 DETAIL**



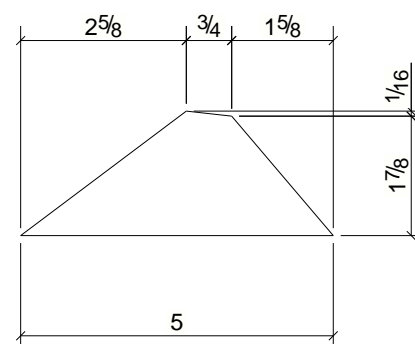
**PL58 DETAIL**



**GS7 DETAIL**

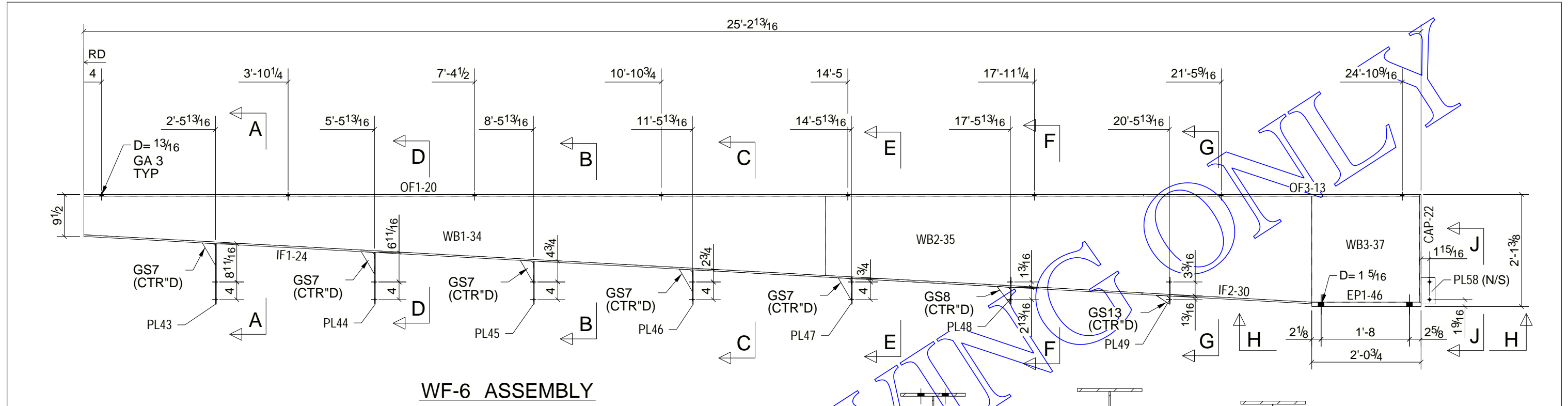


**GS26 DETAIL**



**GS27 DETAIL**

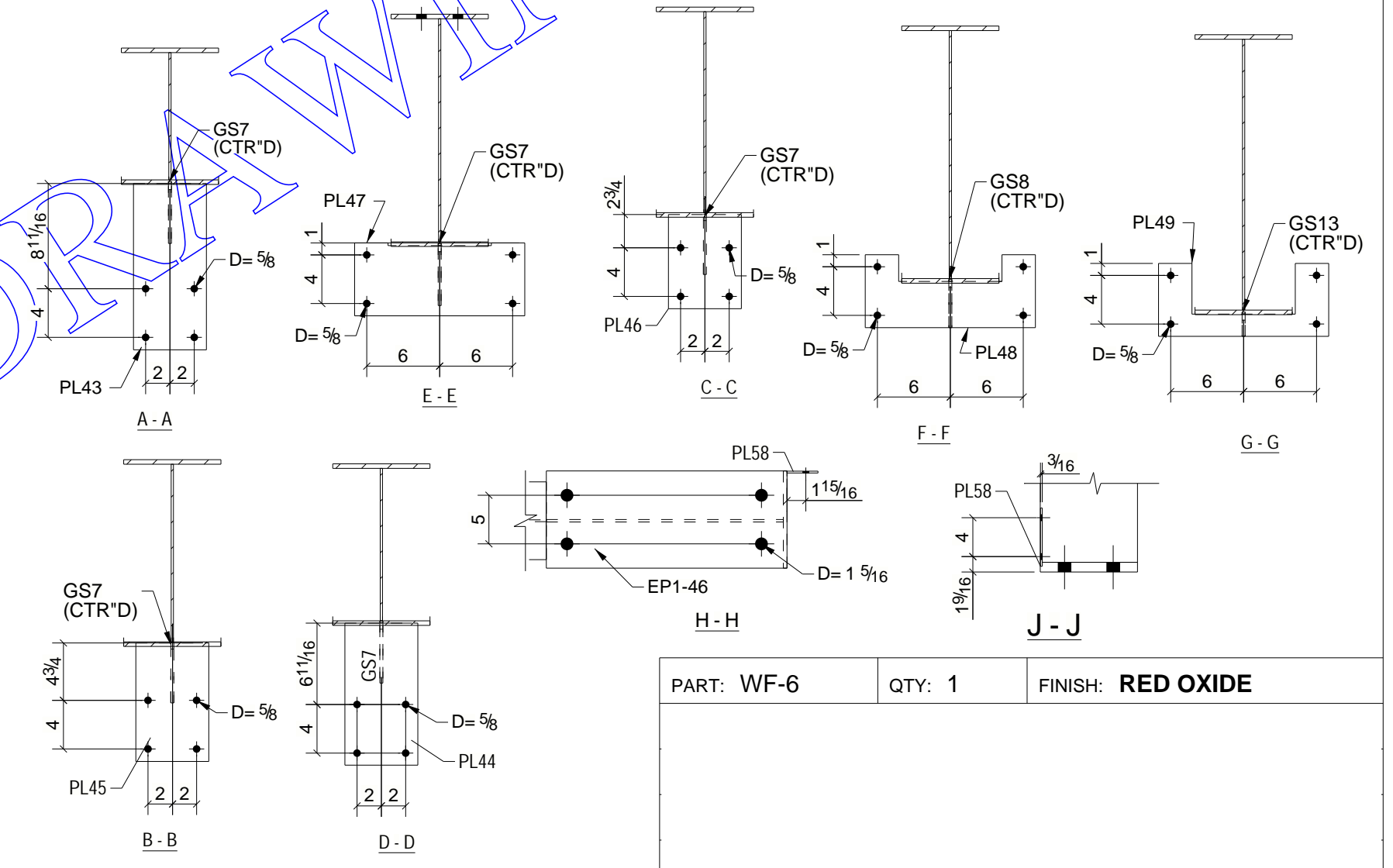
PART: WF-5	QTY: 1	FINISH: <b>RED OXIDE</b>
------------	--------	--------------------------



**WF-6 ASSEMBLY**

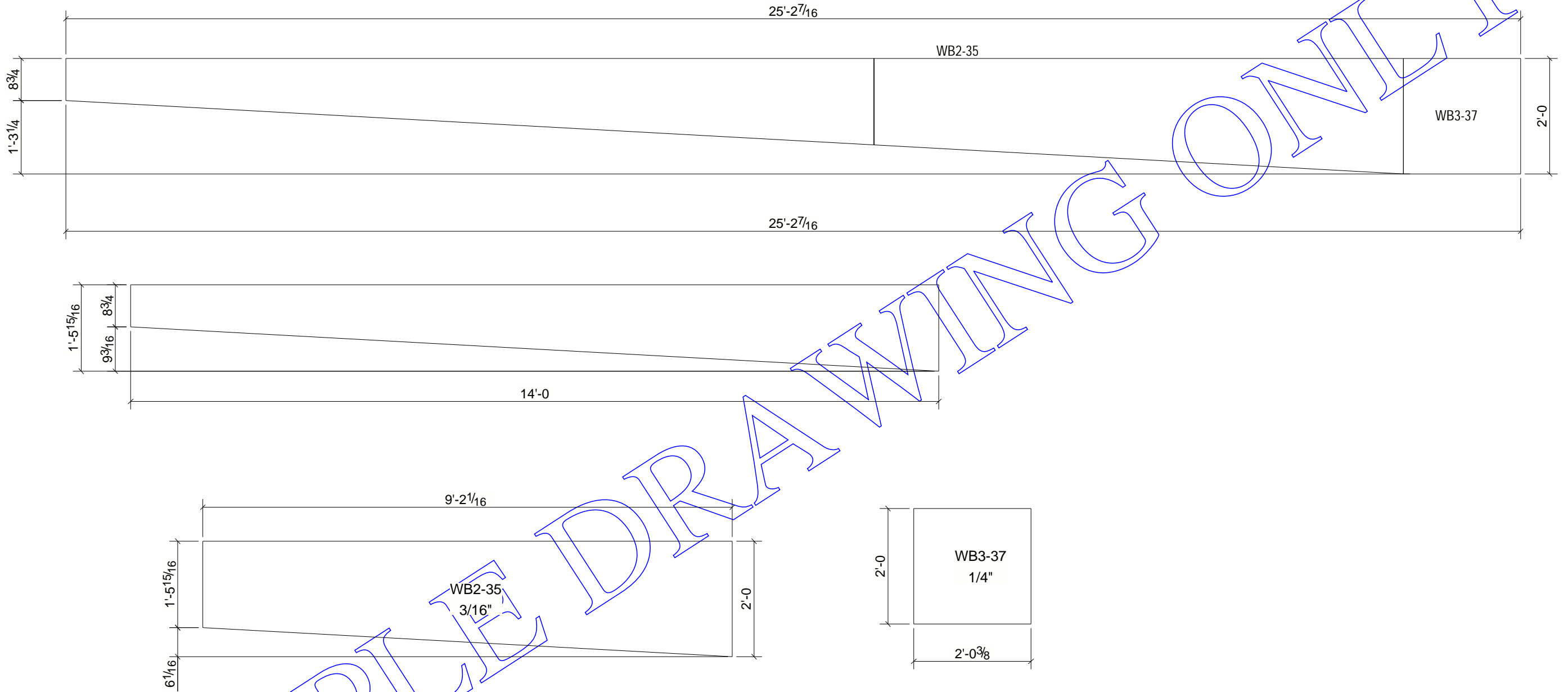
**BILL OF MATERIAL**

Mark	Qty Ea	Qty Tot	Description	Length	Total Wt.	Remarks
WB3-37	1	1	PL1/4"X24"	2'-0 3/8"	41.5	A572-GR.50
WB2-35	1	1	PL3/16"X24"	9'-2 1/16"	122.8	A572-GR.50
WB1-34	1	1	PL3/16"X17 15/16"	14'-0"	119.3	A572-GR.50
PL58	1	1	PL3/16"X3 3/16"	0'-6"	1.0	A529-GR.55
PL49	1	1	PL3/16"X6"	1'-2"	2.6	A529-GR.55
PL48	1	1	PL3/16"X6"	1'-2"	3.5	A529-GR.55
PL47	1	1	PL3/16"X6"	1'-2"	4.4	A529-GR.55
PL46	1	1	PL3/16"X6"	0'-7 3/4"	2.5	A529-GR.55
PL45	1	1	PL3/16"X6"	0'-9 3/4"	3.1	A529-GR.55
PL44	1	1	PL3/16"X6"	0'-11 11/16"	3.7	A529-GR.55
PL43	1	1	PL3/16"X6"	1'-1 11/16"	4.4	A529-GR.55
OF3-13	1	1	PL3/8"X8"	5'-2 3/8"	53.1	A572-GR.50
OF1-20	1	1	PL3/8"X8"	20'-0"	204.2	A572-GR.50
IF2-30	1	1	PL3/8"X8"	3'-2 1/2"	32.7	A572-GR.50
IF1-24	1	1	PL3/8"X8"	20'-0"	204.2	A572-GR.50
GS13	1	1	PL1/4"X1 1/4"	0'-3 5/8"	0.2	A572-GR.50
GS8	1	1	PL1/4"X2"	0'-5"	0.4	A572-GR.50
GS7	5	5	PL1/4"X2 1/4"	0'-5 15/16"	2.6	A572-GR.50
EP1-46	1	1	PL1"X10"	2'-0 3/4"	70.2	A572-GR.50
CAP-22	1	1	PL3/8"X10"	2'-0 3/8"	25.9	A572-GR.50
<b>TOTAL WEIGHT THIS DRAWING</b>					<b>902.2</b>	



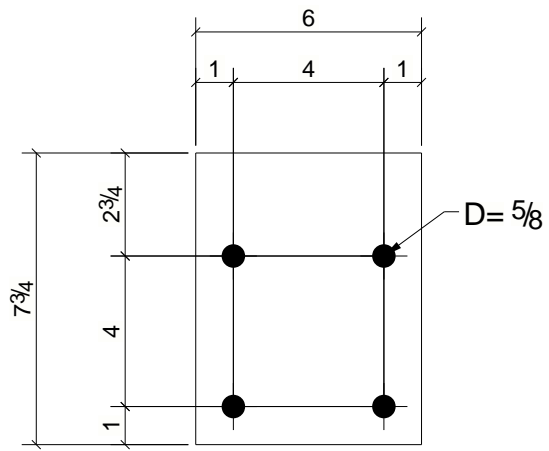
PART: WF-6	QTY: 1	FINISH: <b>RED OXIDE</b>
------------	--------	--------------------------

Tekla Structures

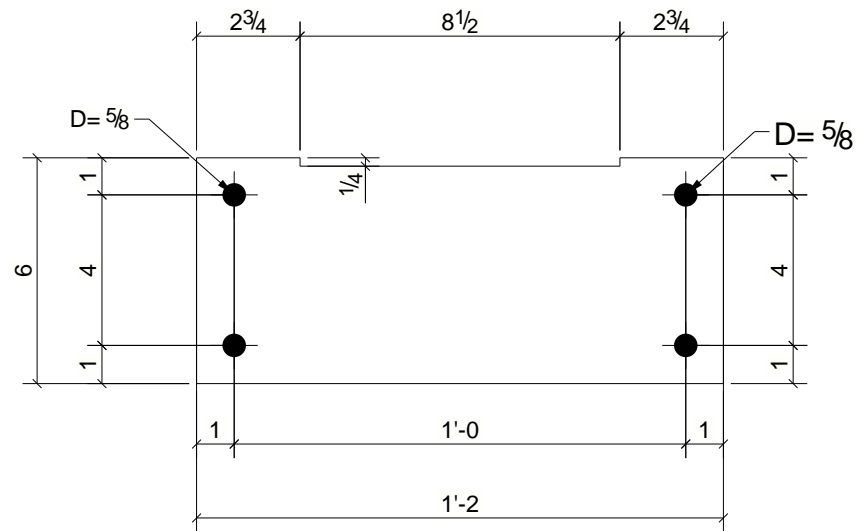


SAMPLE DRAWING ONLY

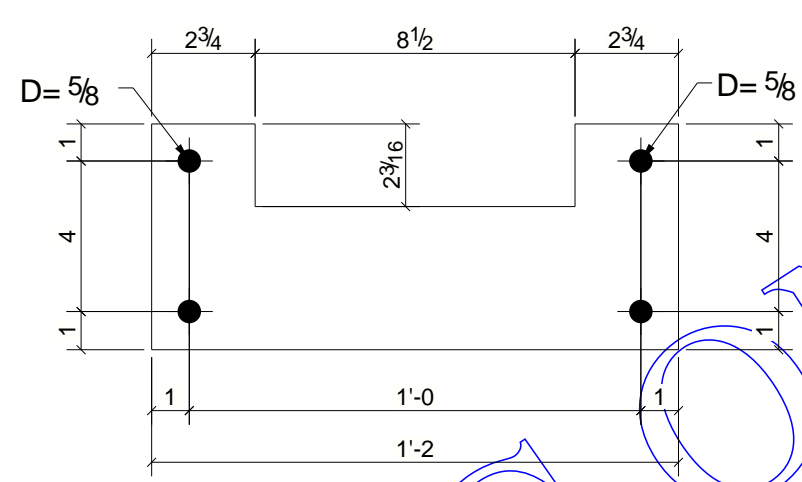
REV	DESCRIPTION	DATE
PART: WF-6	QTY: 1	FINISH: <b>RED OXIDE</b>



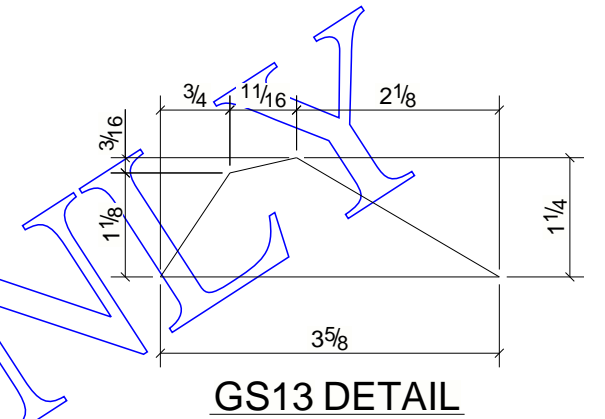
PL46 DETAIL



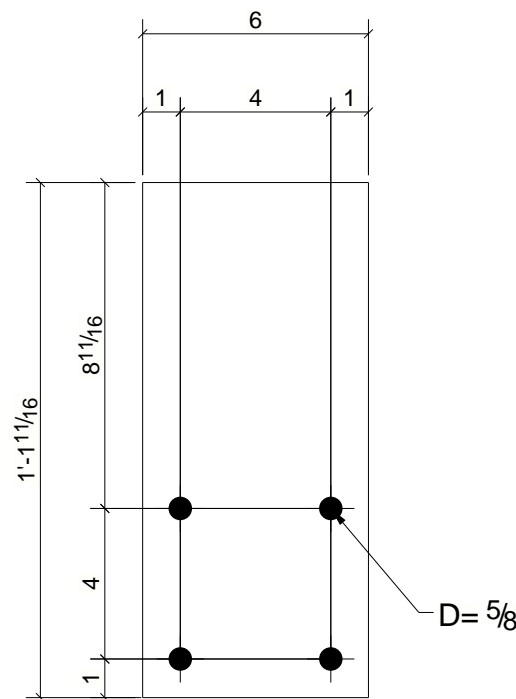
PL47 DETAIL



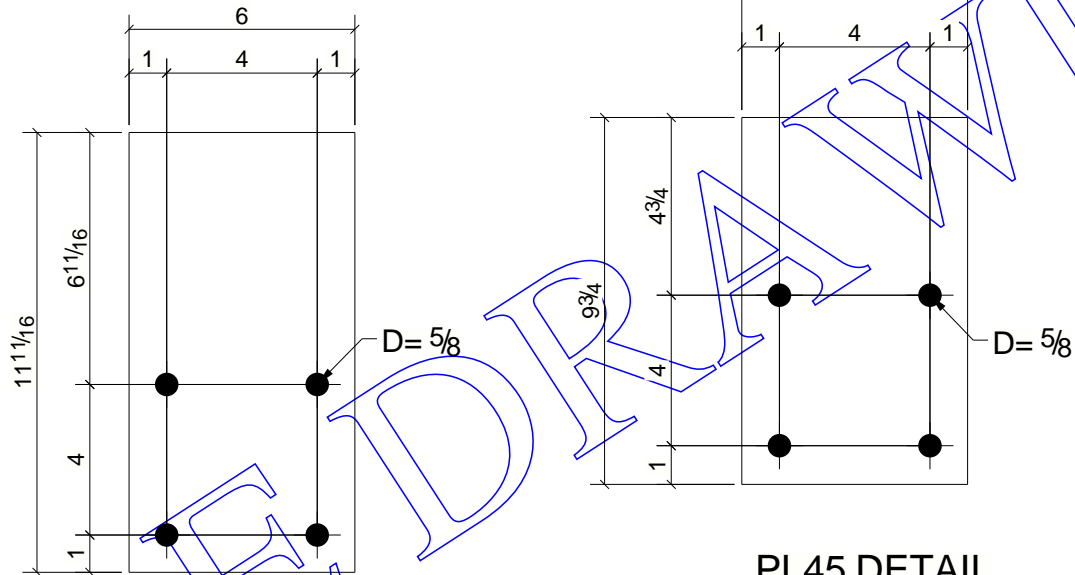
PL48 DETAIL



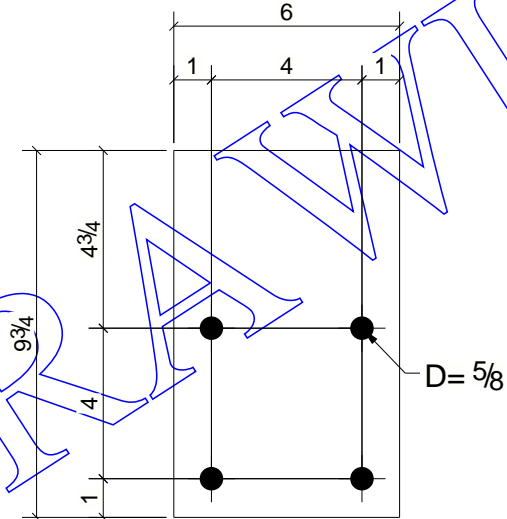
GS13 DETAIL



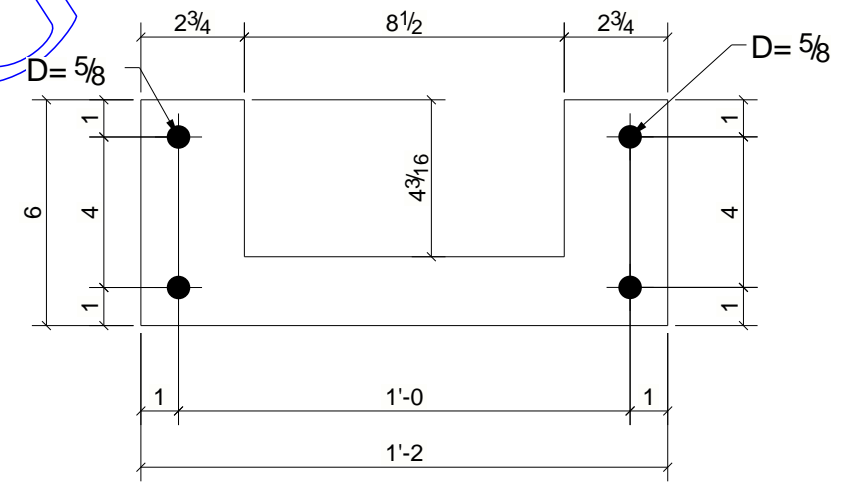
PL43 DETAIL



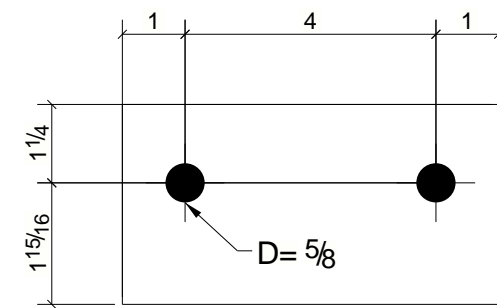
PL44 DETAIL



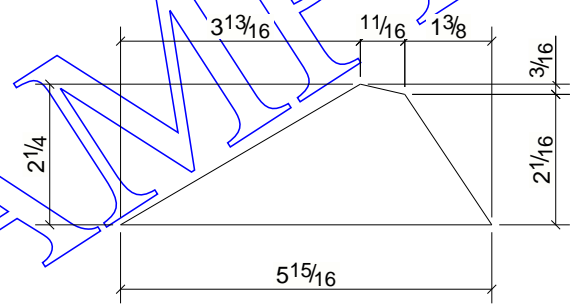
PL45 DETAIL



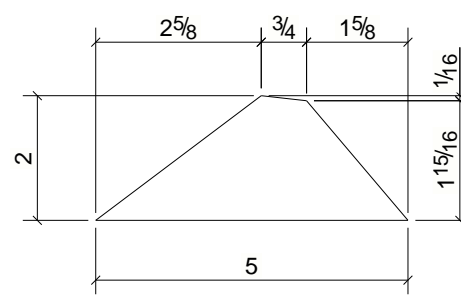
PL49 DETAIL



PL58 DETAIL



GS7 DETAIL



GS8 DETAIL

PART: WF-6	QTY: 1	FINISH: RED OXIDE
------------	--------	-------------------